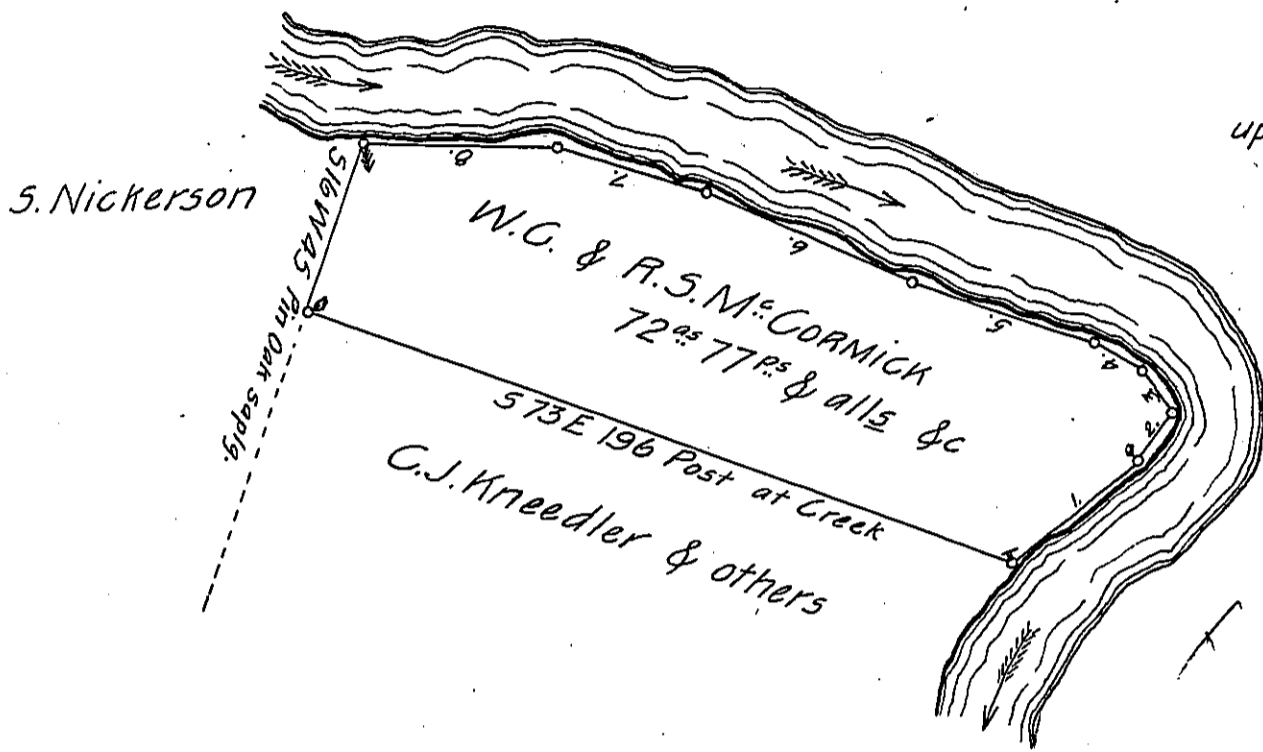


Courses & distances up
 French Creek from Post viz.
 N^o 1 N49 E 42 Maple
 " 2 N32 $\frac{1}{2}$ E 15
 " 3 N39 W 13
 " 4 N65 W 14
 " 5 N74 $\frac{1}{2}$ W 51.0
 " 6 N70 W 58
 " 7 N75 W 40
 " 8 589 W 51 to
 Post & Hemlock thence
 up the hill past Nickerson &c.



Draft of a piece of land situate in French Creek Township,
 Venango County South & West of and adjoining French Creek about one mile
 above Franklin being part of a larger tract of land heretofore Surveyed
 on Settlement and improvement of George Sutley.

Surveyed May 6th 1864 for W.C. & R.S. M^cCormick and con-
 tains as above Shewn seventy two acres seventy seven perches & alls
 &c

Hon. James P. Barr }
 Surveyor General }

Wm. Hilands,
 C.S.

IN TESTIMONY that the above is a copy of the original remaining on file in
 the Department of Internal Affairs of Pennsylvania, made
 conformably to an Act of Assembly approved the 16th day of
 February, 1833, I have hereunto set my Hand and caused
 the Seal of said Department to be affixed at Harrisburg,
 this fourteenth day of March 1906.

Loach P. Brown
 Secretary of Internal Affairs.